



## SPECIFICATION

Electrical Rating : 6A 250VAC/10A 125VAC(UL)  
4(1)A 250VAC(VDE)  
Mechanical life: Over 30000 cycles  
Electrical life: Over 10000 cycles  
Contact resistance: <20mΩ  
Insulation resistance: >1000MΩ  
High voltage resistance: >1500V 1 min.  
Ambient temperature: Terminal side -20 to +85°C  
Actuating side -20 to +55°C  
Storage temperature: -30 ~ +85°C Max  
Atmospheric humidity: Max.85%  
Actuating force: 4N  
Flammability: UL94 V-2  
Temperature rise at the terminal: Max 30°C (UL1054)  
Solder ability of terminal: Max 350°C, 3s

## MATERIALS

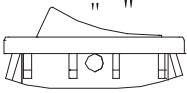
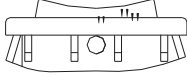
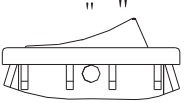
Housing: PA 66  
Rocker: PA66  
Contacts: Silver Alloy  
Terminal: Brass Silver Plated  
Movable Arm: Copper Silver Plated



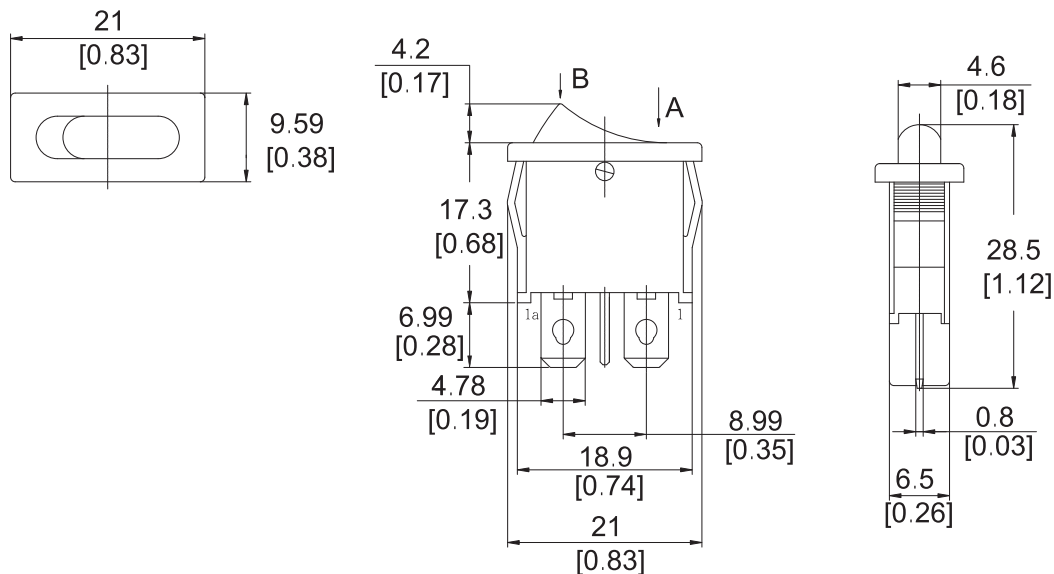
## HOW TO ORDER

R6	1	2	K	K	F	T	0	F	1
Series	Switch Function	Rating	Housing Color	Actuator Color	Marking	Terminal Type	Lamp Voltage	Safety Approval	
Series			W White K Black		See option of marking (See Page 170)		0 Without Lamp		
1 ON-OFF 5 (ON)-OFF					Quick Connect Tab		F 4 Safety Approvals E None Approval		
2 6A 250V AC 10A 125V AC 4(1)A 250 V AC			W White K Black R Red				1 With Barrier 2 Without Barrier		

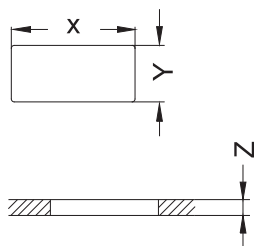
## OPTIONS OF SWITCH FUNCTION

Item NO	POLES &THROWS	Rocker position ( ):Momentary		
		Left	Center	Right
				
R61	SPST	ON	None	OFF
R65	SPST	(ON)	None	OFF

## DIMENSION



## PANEL CUT OUT



Z	Y	X
0.70~1.25	6.65~6.75	19.20~19.30
1.25~2.00	6.65~6.75	19.25~19.35
2.00~3.00	6.65~6.75	19.30~19.40