



IP 67
ACCORDING TO
EN 60529:1991+A1:2001
IEC 60529:2001



SPECIFICATION:

MAX. CURRENT/VOLTAGE RATING WITH RESISTIVE LOAD:

PA S6/S7	400mA 32VAC-100mA 50VDC-125mA 125VAC 500mA 48VAC - 200 mA 50VDC - 200mA 250VAC.
PA L6	100mA 24VDC-life expectancy 200,000 cycles 2A 125VAC-life expectancy 10,000 cycles

INITIAL CONTACT RESISTANCE: 50mΩ max.

INSULATION RESISTANCE: 1GΩ min.at 500VDC.

DIELECTRIC STRENGTH: 1,000 VAC rms.
1,500 VAC rms. for metal material.

ELECTRICAL LIFE AT FULL LOAD:

PA S6/S7	500,000 cycles.
PA L6	200,000 cycles.

OPERATING TEMPERATURE: -30°C to 85°C.

PANEL THICKNESS:

B1 series : 0.8 mm (.031) min. -1.8 mm (.071) max.

B2 series : 1.5 mm (.059) min. -4 mm (.157) max.

B3 series : 3.0±0.25 mm (.118)

TOTAL TRAVEL:

PA S6/S7	1.5 mm(.059)
PA L6	2.5 mm(.098)

OPERATING FORCE: 2N~5N

CONTACT BOUNCE: 10 ms.

MECHANICAL LIFE: 1,000,000 cycles.

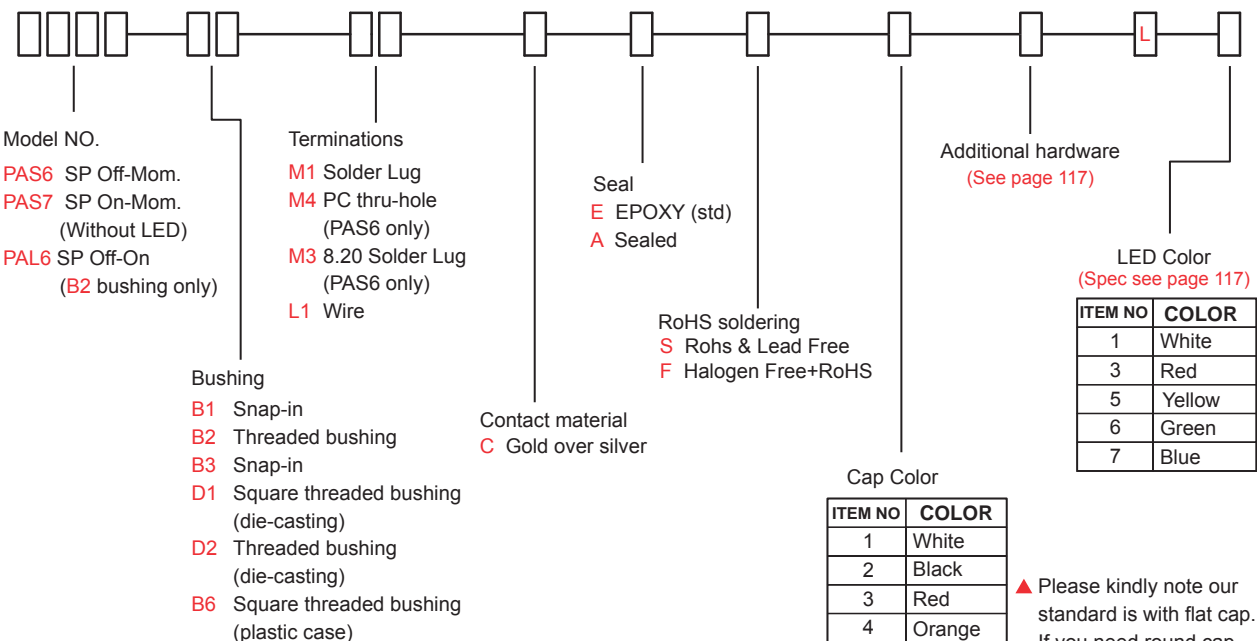
TORQUE: 0.5 Nm max.applied to nut,
1.5 Nm max. for metal material.

SOLDERING: 350°C max.for 5 seconds.

PA Pushbutton Switches





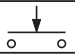

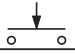
HOW TO ORDER

MODEL NO. BUSHING TERMINATIONS CONTACT MATERIAL SEAL RoHS SOLDERING CAP COLOR ADDITIONAL HARDWARE LED LED COLOR



▲ Please kindly note our standard is with flat cap. If you need round cap, please add "A" before cap color option.

SWITCH FUNCTION

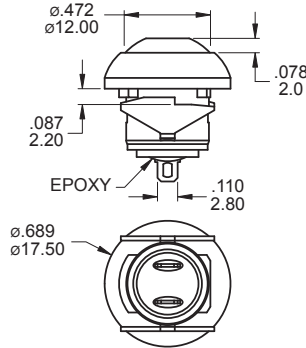
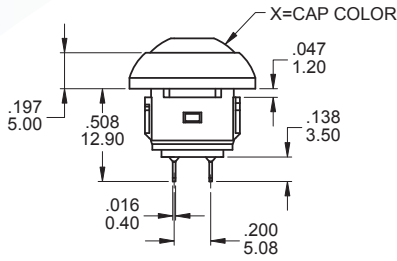
NO. POLES	MODEL NO.	SWITCH FUNCTION		CONNECTED TERMINALS		SCHEMATIC
		POS.1	POS.2	POS.1	POS.2	
						
SP	PAS6	OFF	MOM	OPEN	1-3	
SP	PAS7	ON	OFF(MOM)	1-3	OPEN	
SP	PAL6	OFF	ON	OPEN	1-3	

MOM=MOMENTARY

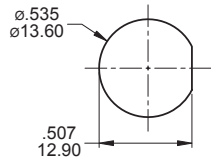


PA
Sub-Miniature Pushbutton Switches

B1



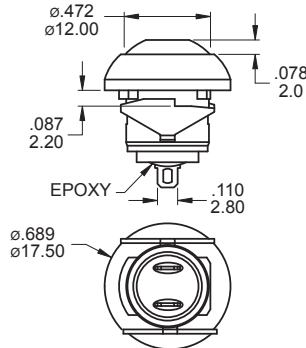
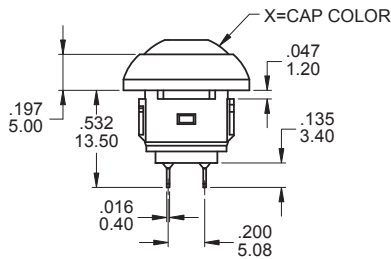
PANEL MOUNTING



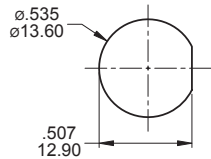
SPST

Part No. Shown : PAS6B1M1CESX-5

B1



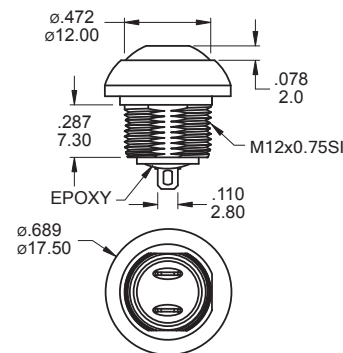
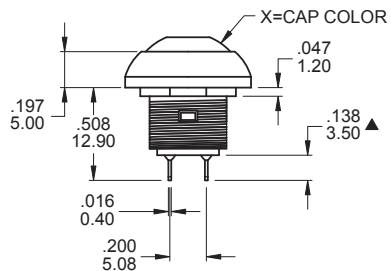
PANEL MOUNTING



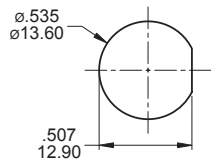
SPST

Part No. Shown : PAS7B1M1CESX-5

B2



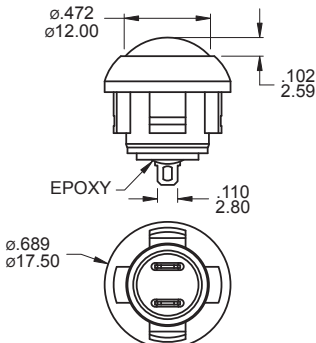
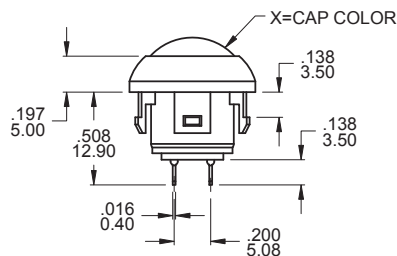
PANEL MOUNTING



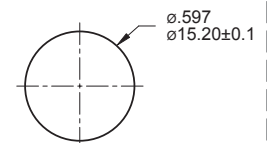
SPST

Part No. Shown : PAS6B2M1CESX-5

B3




PANEL MOUNTING



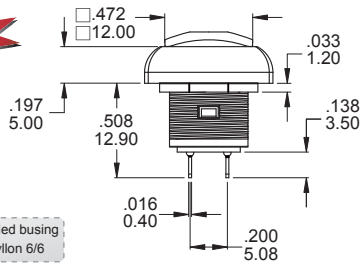
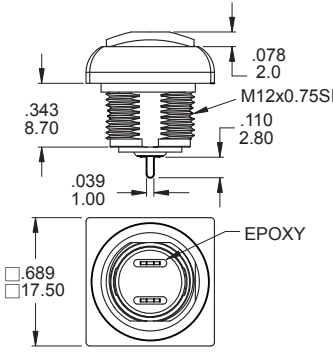
SPST

Part No. Shown : PAS6B3M1CESAX-5

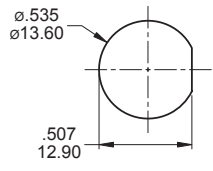
NEW




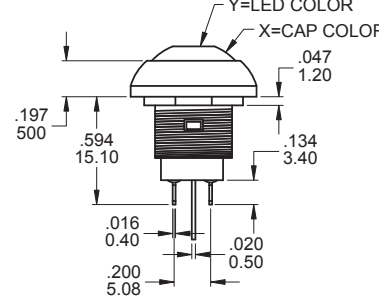
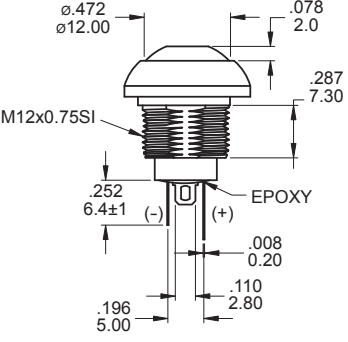
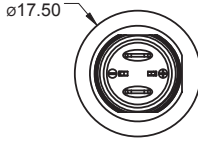
Square threaded busing
Glass filled Nylon 6/6


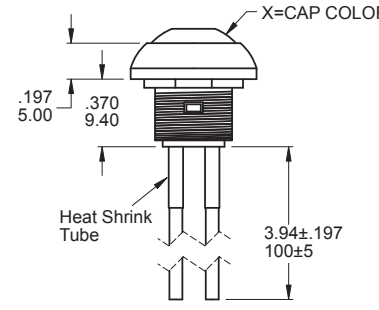
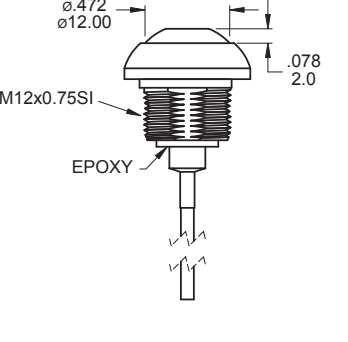
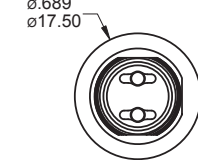
PANEL MOUNTING




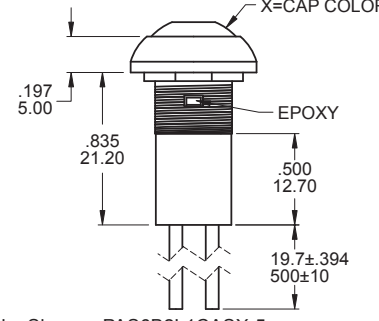
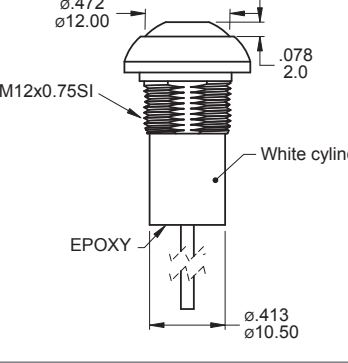
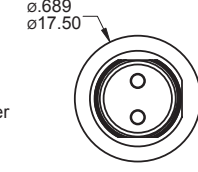
SPST Part No. Shown : PAS6B6M4CESX-5


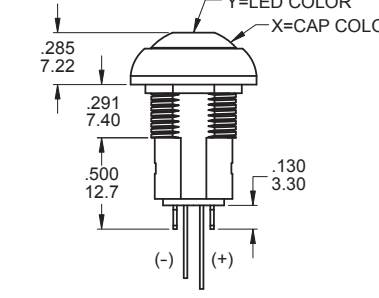
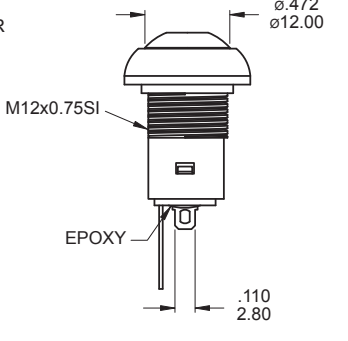
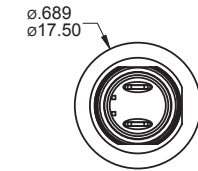
SPST Part No. Shown : PAS6B2M1CESX-5LY

SPST Part No. Shown : PAS6B2L3CESX-5

SPST Part No. Shown : PAS6B2L1CASX-5

SPST Part No. Shown : PAL6B2M1CESX-5LY

PA Pushbutton Switches

BUSHING PLATING



- PLATING
A Chromium
B Tin-nickel Alloy
C Stain-chromium
D Stain-nickel



Chromium



Tin-nickel Alloy



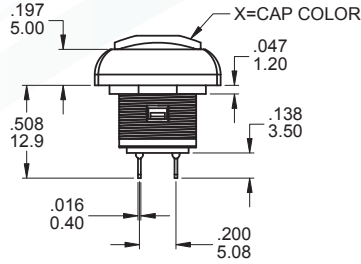
Stain-chromium



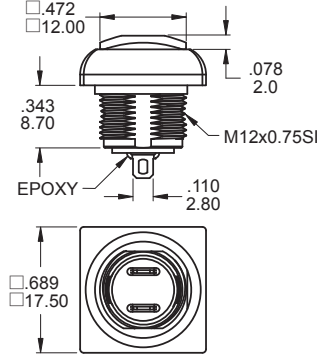
Stain-nickel



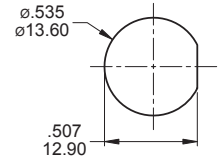
SPST



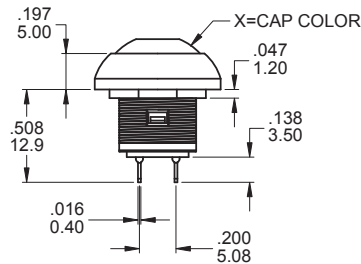
Part No. Shown : PAS6D1M1CESX-5



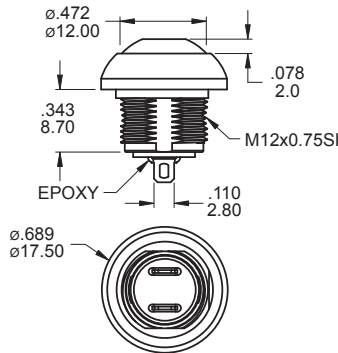
PANEL MOUNTING



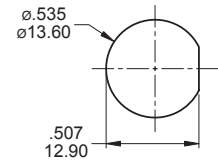
SPST



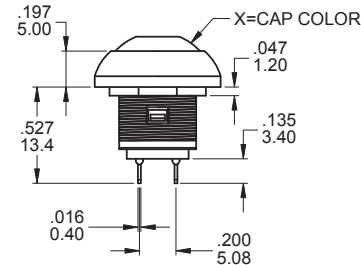
Part No. Shown : PAS6D2M1CESX-5



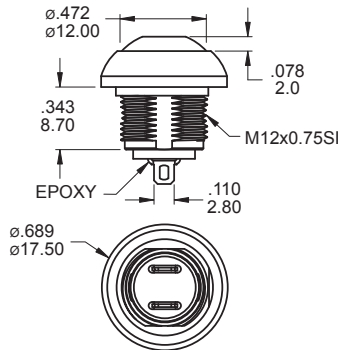
PANEL MOUNTING



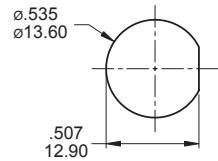
SPST



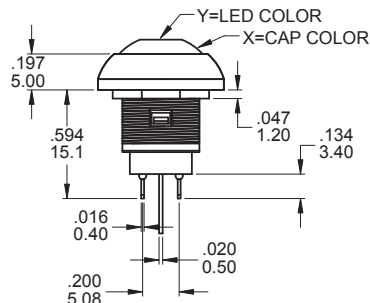
Part No. Shown : PAS7D2M1CESX-5



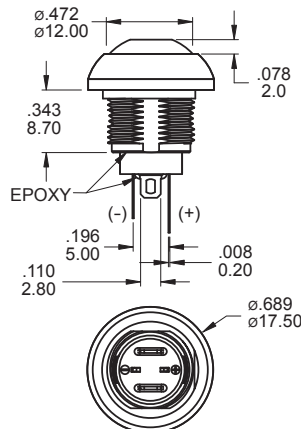
PANEL MOUNTING



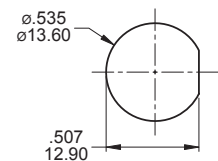
SPST



Part No. Shown : PAS6D2M1CESX-5LY

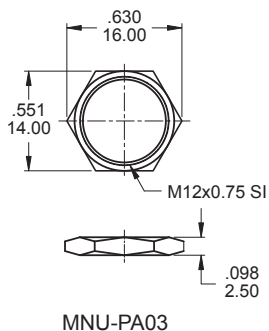


PANEL MOUNTING

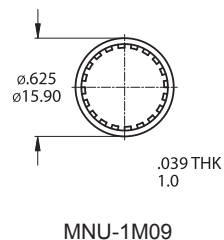


HARDWARE

M12 NUT

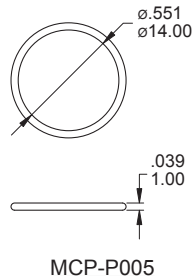


LOCK WASHER



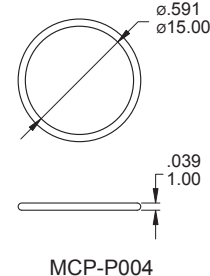
Supplied with B2 / D1 / D2 bushing

O-RING



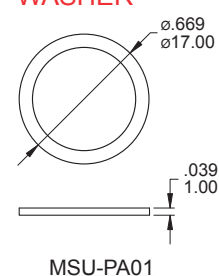
Supplied with PAL6 and D1 / D2 options

O-RING



Supplied standard with B3 options

RUBBER WASHER



Supplied standard with B1 / B2 options

WITH LED ELECTRO-OPTICAL DATA

* The LED specification for reference only

Model No.	Lens Appearance	Color	Electro-optical Data (AT 20mA)				Peak Wavelength	Viewing Angle 2θ 1/2 (deg)	
			Vf (V)		Iv (mcd)				
			Typ.	Max.	Typ.	Min.			
PAS6 & PAS7	Water Clear	Super White	2.8	3.3	200	100	X / Y=0.27	35°	
		Super Red	2.0	2.5	700	200			
		Yellow	2.1	2.6	100	55			
		Green	2.2	2.7	130	70			
		Super Blue	3.1	3.6	580	250			
		Super Yellow (Super Green)	Y	2	2.6	475			210
			G	2	2.6	210			140
		Super Yellow (Super Blue)	Y	2.1	2.6	200			94
			B	3.2	3.6	200			94
		Super Yellow (Super Red)	Y	2.1	2.6	100			63
			R	2	2.6	90			42
		Super Red (Super Green)	R	2	2.6	90			42
	G	2.0	2.6	90	42				
Super Red (Super Blue)	R	2	2.6	90	42				
	B	3.2	3.6	200	94				
Super Green (Super Blue)	G	2.0	2.6	100	42				
	B	3.2	3.6	200	94				
PAL6	Water Clear	White	3.3	4	250	50	X=0.31 Y=0.31	90°	
		Super Red	1.95	2.5	350	70			
		Super Yellow	2	2.5	160	70			
		Super Green	2.1	2.5	70	18			
		Super Blue	3.3	4	150	36			
		Super Yellow (Super Green)	Y	2	2.5	170		50	170°
			G	2.1	2.5	50		18	
		Super Yellow (Super Red)	Y	1.95	2.5	220		70	
			R	2	2.5	170		50	
		Super Red (Super Green)	R	1.95	2.5	220		70	
			G	2.1	2.5	50		18	

SOLDERING PROCESSES

MANUAL SOLDERING: Use soldering iron of 30 watts, controlled at 350°C approximately 5 seconds while applying solder.

WAVE SOLDERING:

Recommended Soldering Temperature: 260 ± 5°C

Duration of Solder Immersion: Max 5 sec.

(PCB is 1.6mm in thickness)

IP 67 for the whole series:
Protected against the effects of immersion up to 1 m water(30mn)

