

SPECIFICATIONS

MECHANICAL

Operation Force: 220+80/-70gf Side push
 160±50gf Vertical push
 Stroke: 0.30+0.1 mm/-0.15mm Side push
 0.20±0.1mm Vertical Side push

ELECTRICAL

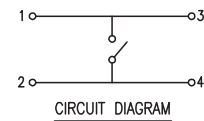
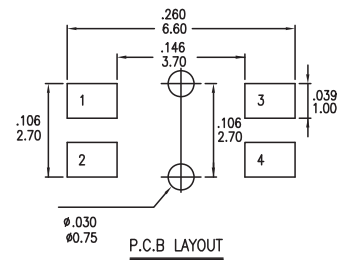
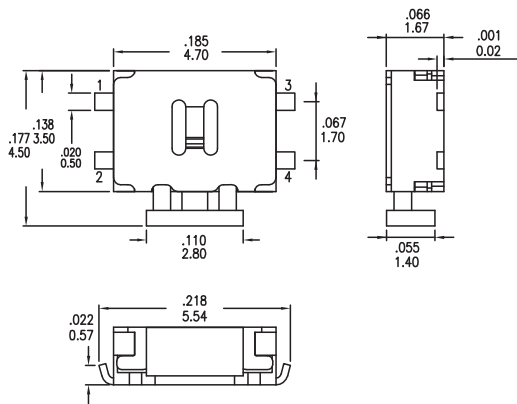
Electrical Life: 100,000 cycles min.
 Rating: 50mA, 12VDC

ENVIRONMENTAL

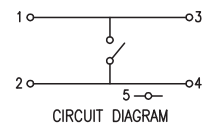
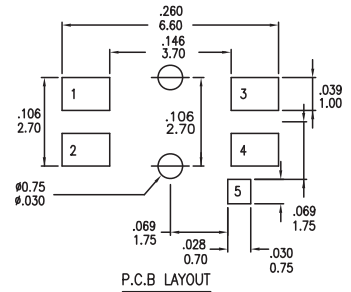
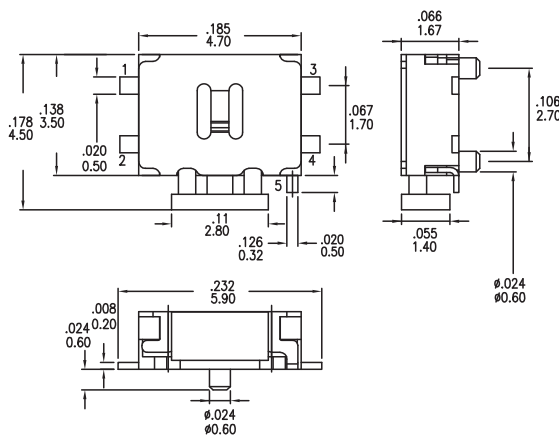
Operation temperature Range: -25°C to +70°C
 Storage temperature Range: -30°C to +80°C



PTL



PTCFG



PTLGP

